

LIVELLETTA

D=0.042 L=207.367 P=3.382%

D=3.734 L=203.109 P=1.666%

D=1.672 L=174.656 P=0.957%

D=0.022 L=48.366 P=0.029%

D=0.880 L=229.981 P=0.300%

PROG 4714.742  
Q 34.434

R	5700.000
T1	116.604
T2	116.604
BS	1.183
SV	233.291
DP	4.08123%

PROG 4982.109  
Q 25.392

R	2500.000
T1	18.959
T2	18.959
BS	0.072
SV	37.694
DP	1.51564%

PROG 5162.218  
Q 21.658

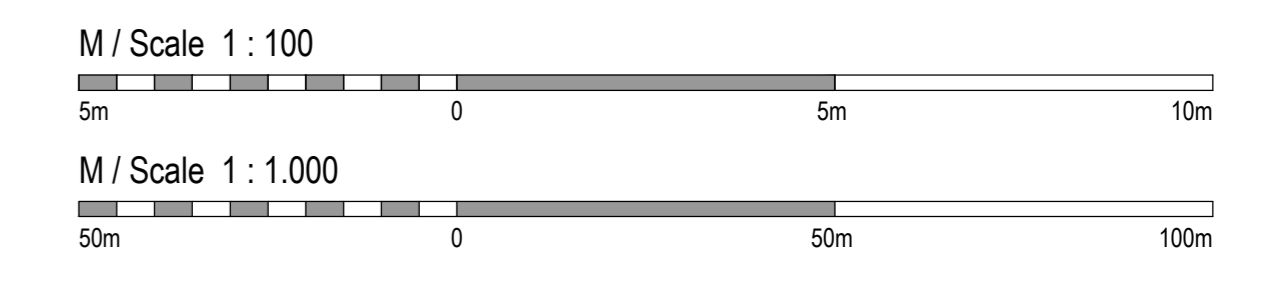
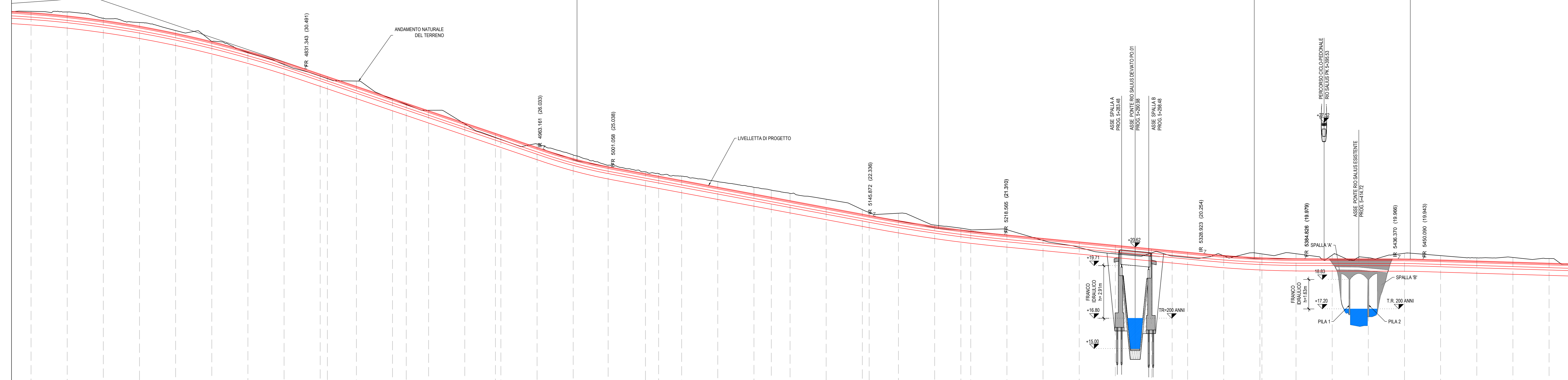
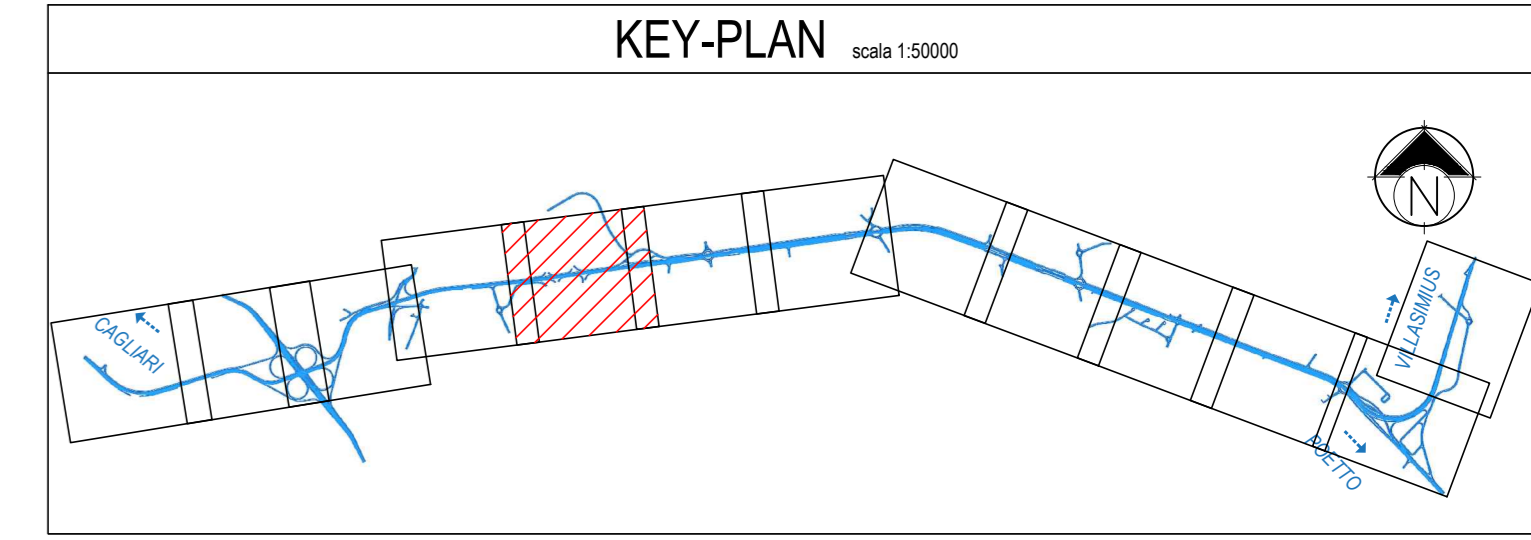
R	8000.000
T1	38.353
T2	38.348
BS	0.083
SV	72.694
DP	0.90867%

PROG 5356.674  
Q 19.986

R	6000.000
T1	27.953
T2	27.961
BS	0.065
SV	55.903
DP	0.83171%

PROG 5443.230  
Q 19.964

R	5000.000
T1	6.860
T2	6.860
BS	0.085
SV	13.720
DP	0.27440%



No. SEZIONI	160	161	162	163	164	165	166	167	168	169	170	171	172	173	174	175	176	177	178	179	180	181	182	183	184	185	186	187	188	189	190	191	192	193	194	195	196	197	198	199	200	201	202																																			
DISTANZE PROGRESSIVE	4000.00	4700.00	4720.00	4740.00	4760.00	4780.00	4800.00	4820.00	4840.00	4860.00	4880.00	4900.00	4920.00	4940.00	4960.00	4980.00	5000.00	5020.00	5040.00	5060.00	5080.00	5100.00	5120.00	5140.00	5160.00	5180.00	5200.00	5220.00	5240.00	5260.00	5280.00	5300.00	5320.00	5340.00	5360.00	5380.00	5400.00	5420.00	5440.00	5460.00	5480.00	5500.00	5520.00																																			
DISTANZE PARZIALI	100	20.00	20.00	20.00	20.00	20.00	20.00	20.00	20.00	20.00	20.00	20.00	20.00	20.00	20.00	20.00	20.00	20.00	20.00	20.00	20.00	20.00	20.00	20.00	20.00	20.00	20.00	20.00	20.00	20.00	20.00	20.00	20.00	20.00	20.00	20.00	20.00	20.00	20.00	20.00	20.00	20.00	20.00																																			
QUOTE TERRENO	33.67	33.64	33.30	33.05	32.61	32.20	31.79	31.39	30.98	30.72	30.20	29.81	29.62	29.82	29.62	29.19	27.49	27.44	26.92	26.53	26.33	25.92	25.72	25.37	24.79	24.79	24.65	24.31	24.65	24.25	23.87	23.37	22.82	22.45	22.69	22.69	22.59	22.59	22.09	22.49	21.77	21.84	21.67	21.67	21.56	21.30	21.09	20.99	20.80	20.72	20.30	20.30	20.17	20.17	20.05	20.34	20.05	20.16	20.14	20.14	19.88	19.88	19.67	19.67	19.67	19.67	19.86	19.86	19.86	19.86	19.85	19.85	19.79	19.79	19.79	19.79	19.73	19.73
QUOTE PROGETTO	33.60	33.42	33.17	32.85	32.46	32.00	31.46	30.86	30.20	29.59	28.95	28.39	27.74	27.02	26.25	25.45	24.68	24.79	24.65	24.31	24.65	24.25	23.87	23.37	22.82	22.45	22.69	22.69	22.59	22.59	22.09	22.49	21.77	21.84	21.67	21.67	21.56	21.30	21.09	20.99	20.80	20.72	20.30	20.30	20.17	20.17	20.05	20.34	20.05	20.16	20.14	20.14	19.88	19.88	19.67	19.67	19.67	19.67	19.86	19.86	19.86	19.86	19.85	19.85	19.79	19.79	19.79	19.79	19.73	19.73								
ETTometriche	[Scale bar from 0 to 50m]																																																																													
AND. PLANIMETRICO	[Scale bar from 0 to 50m]																																																																													
AND. CIGLI	[Scale bar from 0 to 50m]																																																																													



GARA CA 08/15 - NUOVA SS 554 CAGLIARITANA  
ADEGUAMENTO DELL'ASSE ATTREZZATO URBANO ED ELIMINAZIONE  
DELLE INTERSEZIONI A RASO DAL KM 1+500 AL KM 11+850

**PROGETTO DEFINITIVO**  
**ASSE STRADALE PRINCIPALE**  
**PROGETTO STRADALE**  
**ASSE STRADALE PRINCIPALE**  
Profilo di progetto. Tav. 5 di 13

CODICE PROGETTO	progetto	numero	campo 1	campo 2	campo 3	campo 4	rev	SCALA	DATA
DPCA 06 D	1501	T00	PS01	TRA	FP05	C	1:10000-1:100	03/05/19	



PROGETTISTA INDICATO COSTITUENDO R.T.P.  
Capogruppo Mandataria R.T.P. Mandante Mandante

**SWS** **ASTALDI** **ING. FRANCESCA LEO**  
RESPONSABILE DELL'INTEGRAZIONE FRA LE PRESTAZIONI SPECIALISTICHE Ing. Paolo Cucino RESPONSABILE ELABORATO Ing. Paolo Cucino